

OM-EN-EB7EP-3.10HP

April 1, 2021

***EcoBooster***<sup>®</sup>

---

**Operation Manual**

Type **EB7EP**

---


HP Simplified edition (Excluding wiring and terminal layout diagram)

**FUJI BC**  
**ENGINEERING**

## Contents

FOR YOUR SAFETY	3P
SPECIFICATION	4P
RECOMMENDED TOOLS	5P
HOW TO USE	6-7P
CONFIGURATION OF INNER PRESSURE CONTROL SWITCH	8-9P
ACCELARATION AIR BYPASS VALVE SETTING	10P
RECOMMENDED LUBRICANTS	11P
WARRANTY	11P
CONTACT	11P
SUPPLEMENTALY DRAWING	
Assembly	12P
Flow sheet	13P
Parts list	14P
Wiring	15P
Terminal block layout	16P
DIGITAL PRESSURE SWITCH OPERATION MANUAL	17-21P

## FOR YOUR SAFETY

 **WARNING** Improper use of the equipment may cause serious injury or death.

 **CAUTION** Improper use of the equipment may cause injury or material damages.



- EcoBooster is the device for Micro lubrication system to cut metals.  
Do not use for other purposes.
- When flammable oil such as volatile oil is used, it may catch a fire.
- Air pressure should be less than 0.8MPa. When it was over 0.8 MPa, it may damage tubing and other devices. (AC SOLENOID type Max . Pressure 0.7MPa)
- Do not expose to a material, such as strong acid, strong alkali, corrosive gas.  
They may damage tubing and other devices.



- Use Bluebe LB-7 or LB-10 type oil. When other oil is used, it may damage the device.
- Do not fill the oil over H line. Drain the overflow oil from the drain valve.

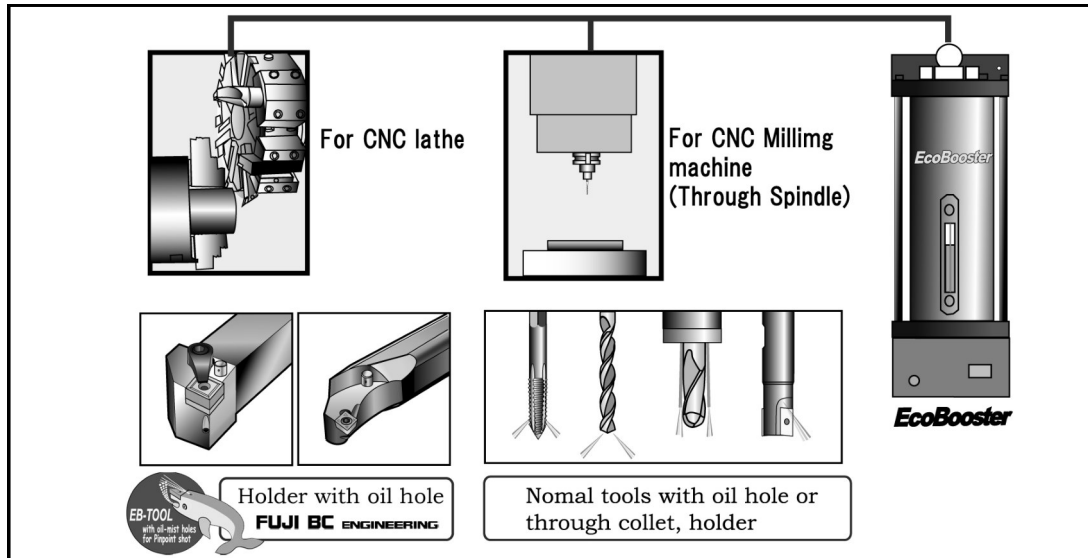
### Background Information

EcoBooster has been specifically designed to dispense controlled amount of Bluebe oil for variety of machining applications. Use of non-genuine oil in the system may result in damage to the unit.

## SPECIFICATION

○ <u>Maximum working pressure</u>	<u>0.8 MPa</u>
○ <u>Working pressure range</u>	<u>0.4 ~ 0.8 MPa (AC SOLENOID Type 0.7MPa)</u>
○ <u>Tank capacity</u>	<u>1,200mL</u>
○ <u>Oil consumption</u>	<u>2 ~ 70 mL/hour (Depend on use condition)</u>
○ <u>Pump strokes</u>	<u>※ 0Hz, 0.125 Hz ~ 0.5 Hz (Max)</u> <u>※ In case of minimum amount, the mist is generated only with the Air Acceleration Solenoid without driving the pump and the Mist Air Solenoid.</u>
○ <u>Mounting</u>	<u>M6 (2 holes)</u>
○ <u>Mist outlet</u>	<u>1 place (Φ12 tube connector)</u>
○ <u>For input connect</u>	<u>OIL DETECTOR (in Tank)</u> <u>INNER PRESSURE CONTROL SWITCH (2 outputs)</u>
○ <u>For output connect</u>	<u>AIR ACCELERATION SOLENOID VALVE</u> <u>MIST AIR SUPPLY SOLENOID VALVE</u> <u>PUMP DRIVE SOLENOID VALVE</u>
○ <u>Dry weight</u>	<u>8kg</u>

## Recommended tools



Cutting tool / Holder	Total cross section area
Gap(sukima) through	<b>0.3</b> mm <sup>2</sup> < Total cross sectional area < <b>2.0</b> mm <sup>2</sup>
Collett through nozzle	
Drill with oil hole	
Tap with oil hole	
Milling tool with oil hole	
Bluebe <b>EB-TOOL</b>	Optimized for <i>EcoBooster</i>

One hole		Two holes	
ΦD	mm <sup>2</sup>	ΦD	mm <sup>2</sup>
Φ0.4	0.13	Φ0.4	0.25
Φ0.5	0.20	Φ0.5	0.40
Φ0.6	0.28	Φ0.6	0.56
Φ0.7	0.38	Φ0.7	0.76
Φ0.8	0.50	Φ0.8	1.00
Φ0.9	0.63	Φ0.9	1.26
Φ1.0	0.78	Φ1.0	1.56
Φ1.1	0.95	Φ1.1	1.90
Φ1.2	1.13	Φ1.2	2.26
Φ1.3	1.33	Φ1.3	2.66
Φ1.4	1.54	Φ1.4	3.08
Φ1.5	1.77	Φ1.5	3.54
Φ1.6	2.02	Φ1.6	4.04
Φ1.7	2.27	Φ1.7	4.54
Φ1.8	2.54	Φ1.8	5.08
Φ1.9	2.83	Φ1.9	5.66
Φ2.0	3.14	Φ2.0	6.28
Φ2.2	3.80	Φ2.2	7.60
Φ2.4	4.52	Φ2.4	9.04
Φ2.6	5.30	Φ2.6	10.6
Φ2.8	6.10	Φ2.8	12.3
Φ3.0	7.10	Φ3.0	14.1
Φ3.2	8.00	Φ3.2	16.1

## Recommended oil hole diameter

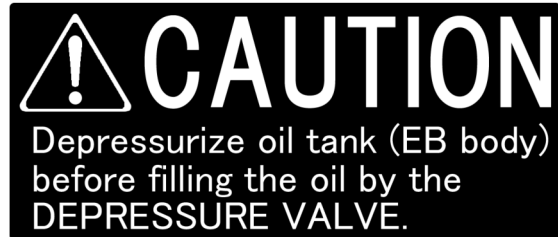
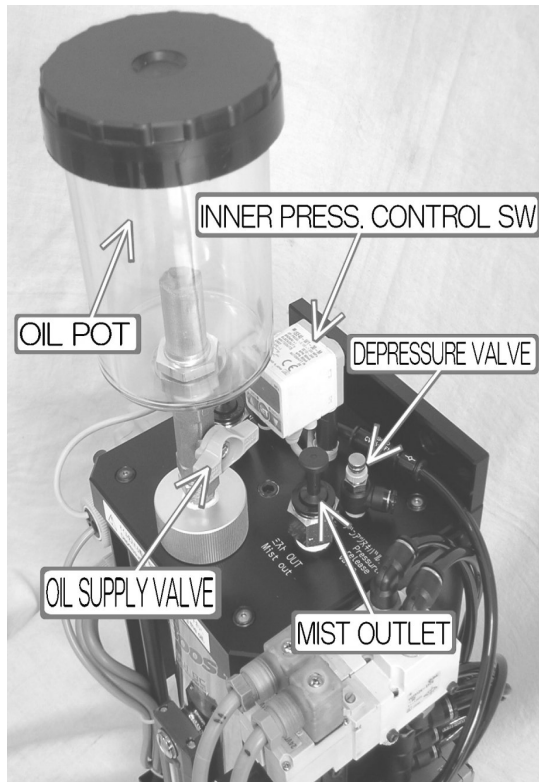
Dry mist does not adhere to the inside of piping or spindle but it must be liquefied at the cutting point. Oil hole diameter need to be between 0.3mm<sup>2</sup> to 2mm<sup>2</sup> in diameter to obtain the workable condition of EB7EP.

Open Acceleration air bypass valve when oil hole diameter is more than 2mm<sup>2</sup>. (Supported cross sectional area within 5mm<sup>2</sup>.)

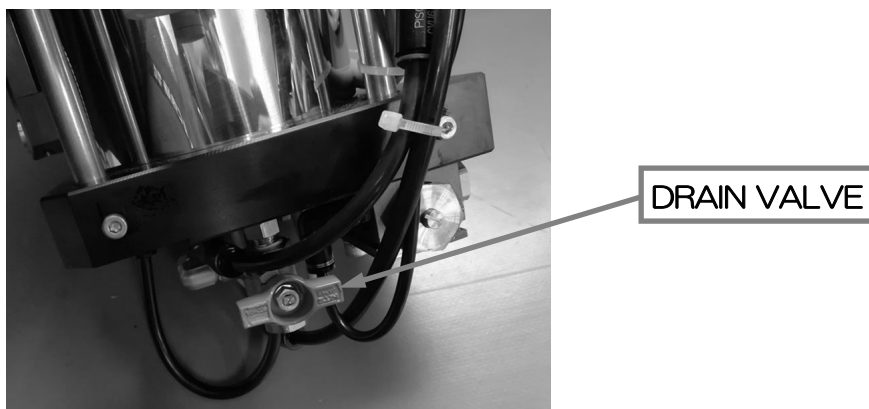


## HOW TO USE

### PROCEDURE TO FILL THE OIL



1. For your safety, be sure to stop the operation of the EcoBooster when oil is refilled.
2. Depressurize the oil tank before filling the oil by the DEPRESSURE VALVE.
3. Check if the tank is completely depressurized.
4. Remove the OIL POT cap.  
Do not allow any dust into the OIL POT.
5. Fill up the OIL POT.  
The capacity of the OIL POT is about 300ml.
6. Supply oil from OIL POT to the tank by opening the OIL SUPPLY VALVE.
7. When the filling level is not enough, repeat 5 & 6 again.
8. Do not fill the oil over the H-level.  
When the filling level is over the H-level, drain the oil from drain valve.
9. When oil is filled, tighten the OIL POT cap and shut off the OIL SUPPLY VALVE & the DEPRESSURE VALVE.



## Air Control

EcoBooster generates dry mist in the chamber with the difference of air pressure.

### a) Mist air

When the solenoid valve for controlling mist air line is ON, it always supplies constant amount of dry mist (micro lubricant droplets).

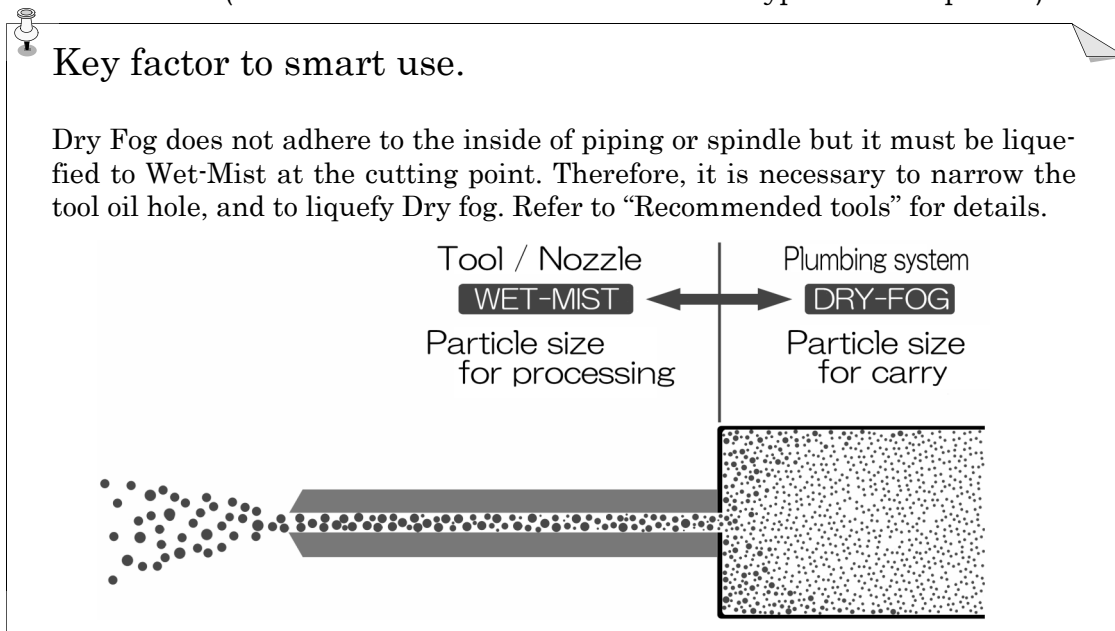
Inner pressure control switch control the solenoid valve ON/OFF. See the “Inner Pressure Switch setting” at page 8.

### b) Acceleration air

Inner air pressure changes when the size of oil hole of the tools changes. When oil hole get larger, inner air pressure decreases. When inner pressure get lower and need more air to generate dry mist, acceleration air start to work together with the Mist air. See the “Inner Pressure Control Switch setting” at page 8.

Furthermore, EB7EP has the Acceleration air bypass valve (manual adjustment) to add more air to hold the necessary air pressure level in the chamber. If inner pressure switch indicates the figure lower than the set value at n-1, open the Acceleration air bypass valve to boost the reading between n-1 and (n-1+H-1). In a case when reading stays still less than the n-1 value, it means the oil hole of that particular tool is too big. It is suggested to set the tool which has biggest oil hole and run EcoBooster to test if air pressure can be adjusted in advance. The tool which has too big oil hole needs to be plugged and drilled again for smaller hole. However, keep in mind that too much of additional air supply may disturb creating the mist in the chamber.

Caution: If you see white smoke at the tip of the cutting tool, it means the size of hole is too big. Make the oil hole smaller. Acceptable size of oil hole is 0.3—2.0 mm<sup>2</sup> in total. (Max. 0.5mm<sup>2</sup> : when Acceleration air bypass valve opened.)



## OIL CONSUMPTION

The speed of the pump cycle is controlled by CNC of machine. The standard speed of the pump is one stroke per two second. Adjustment is made by changing M-code or switch. Sound of 1 times / 2 sec.(0.5Hz) is for maximum dispensing volume and 1 time / 8 sec.(0.125Hz) is for middle dispensing volume of oil. No sound is for minimum volume. Standard consumption is 4ml per one hour. Oil consumption depends on cutting condition and size of oil hole of tools.

## CONFIGURATION OF INNER PRESSURE CONTROL SWITCH

### Why Inner Pressure control switch required.

EcoBooster generates dry mist in the unit (chamber) by utilizing difference pressure of supplied air and that of tank inside. Basically, the hole of cutting tools has been changed, pressure of tank inside is changed so inner pressure must be maintained with oil holes of cutting tool changed every time. Inner Pressure control switch offers above issue to keep the difference of pressure constant with cutting tools changed.

Here shows pressure switch configuration.

The configuration value depends on supplied air pressure. Please read “How to configure inner pressure switch” in detail.

**Example** ▶

Air Supply	Acceleration Air OUT1		Mist Air OUT2	
	n_1	H_1	n_2	H_2
0.4 MPa	0.170	0.020	0.185	0.015
0.5 MPa	0.220	0.020	0.235	0.015
0.6 MPa	0.320	0.020	0.335	0.015
0.7 MPa	0.440	0.020	0.435	0.015
0.8 MPa※	0.540	0.020	0.535	0.015

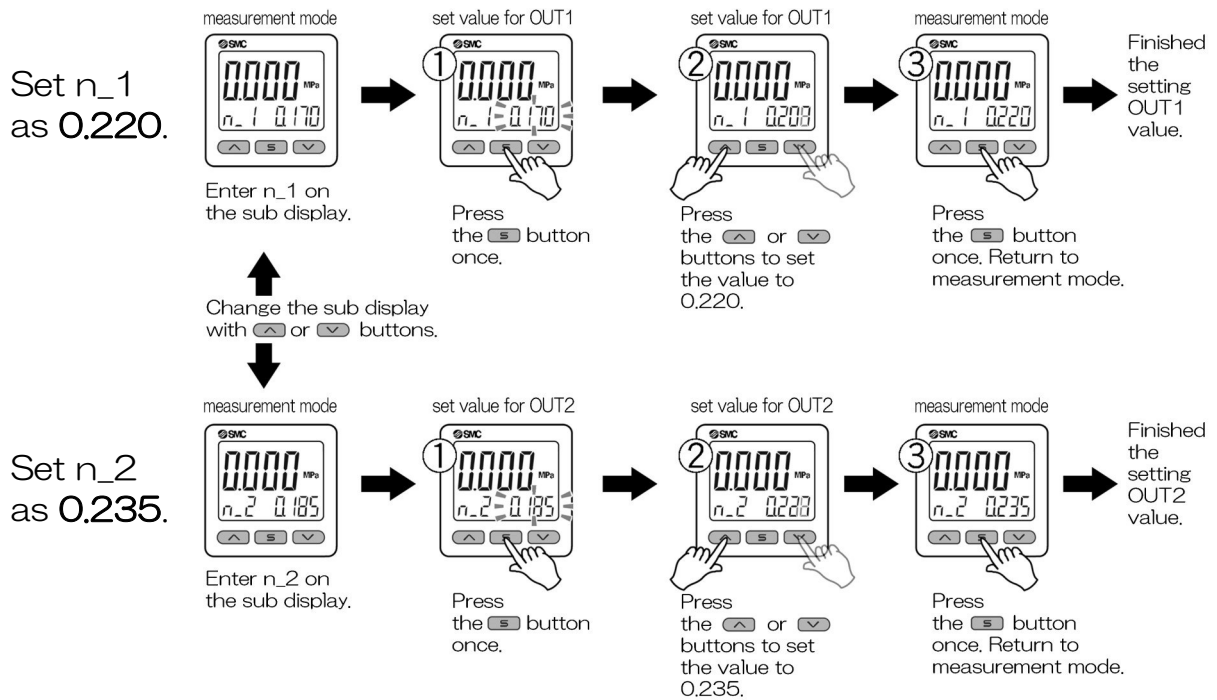
※AC type solenoid valves have a maximum working pressure of 0.7MPa.

Be sure to set the value as indicated according to the given air supply pressure. See the setting procedure at next page.



## How to set INNER PRESSURE CONTROL SWITCH

**Example** for Supply air pressure of 0.5MPa



※ Please look at the Digital Pressure Switch operation manual attached at the end.

## ACCELERATION AIR BYPASS VALVE SETTING

Flow quantity of mist is increases when oil hole diameter is larger. And inner pressure is goes down to maintain the proper differences between air supply and inner pressure, additional air need to be supplied by ACCELERATION AIR BYPASS VALVE .

Use the large oil hole diameter among tolls at ATC to set up the inside pressure of EcoBooster. Open the ACCELERATION AIR BYPASS VALVE until the value of INNER PRESS. CONTROL SW. stays within the set value.

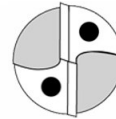
If ACCELERATION AIR BYPASS VALVE was adjusted once, it is not necessary to adjust ACCELERATION AIR BYPASS VALVE as long as the large oil hole tool in ATC is not changed. EcoBooster will control the inner pressure automatically according to the tools in ATC.



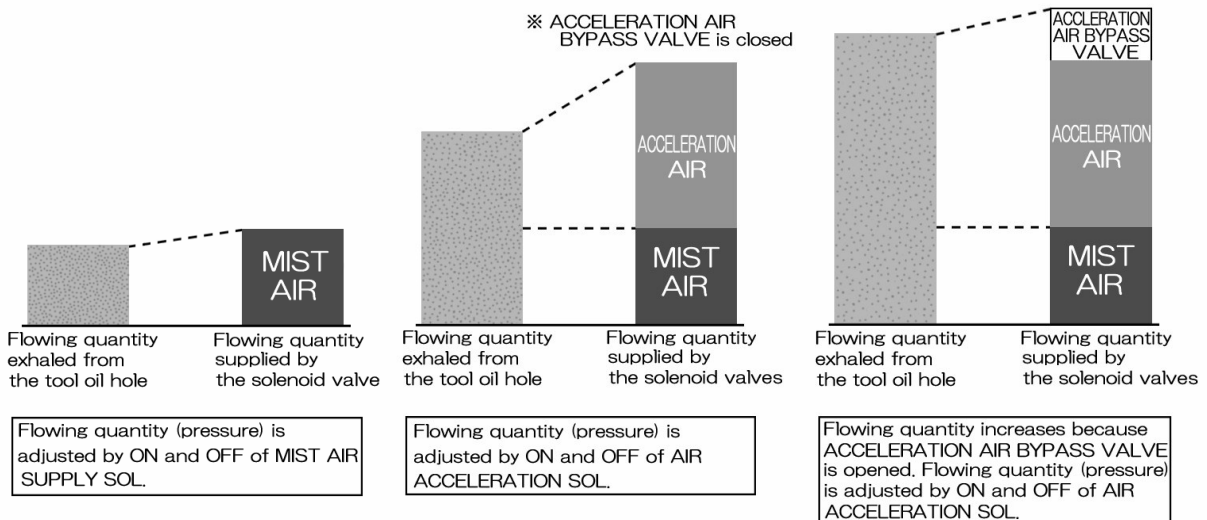
Smaller oil hole



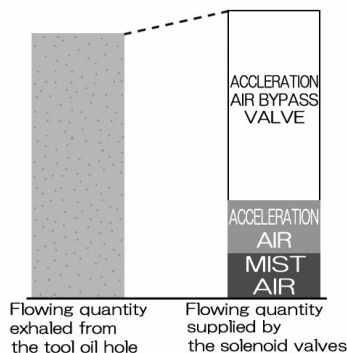
Large oil hole



Larger oil hole



Open ACCELERATION AIR BYPASS VALVE too much, if so . . .



The air supplied by the ACCELERATION AIR BYPASS VALVE is not to make mist. It helps to maintain pressure in the chamber when necessary. When the ACCELERATION AIR BYPASS VALVE is opened too much, pressure in the chamber can be maintained by air but it doesn't make mist. As a result, mist quantity decreases. It is important to set the ACCELERATION AIR BYPASS VALVE at the minimum requirement that can maintain proper pressure in the chamber. Concretely, adjust the AIR ACCELERATION SOL to turn off once every 3 to 5 seconds.

## RECOMMENDED LUBRICANTS

Viscosity of oil is important factor to generate micro lubricant droplets. Also from the safer work condition view point, we recommend the following oil to use.

**Bluebe LB-7, or LB-10 (in JAPAN)**  
**Accu-lube LB-6000 (in USA, Europe)**

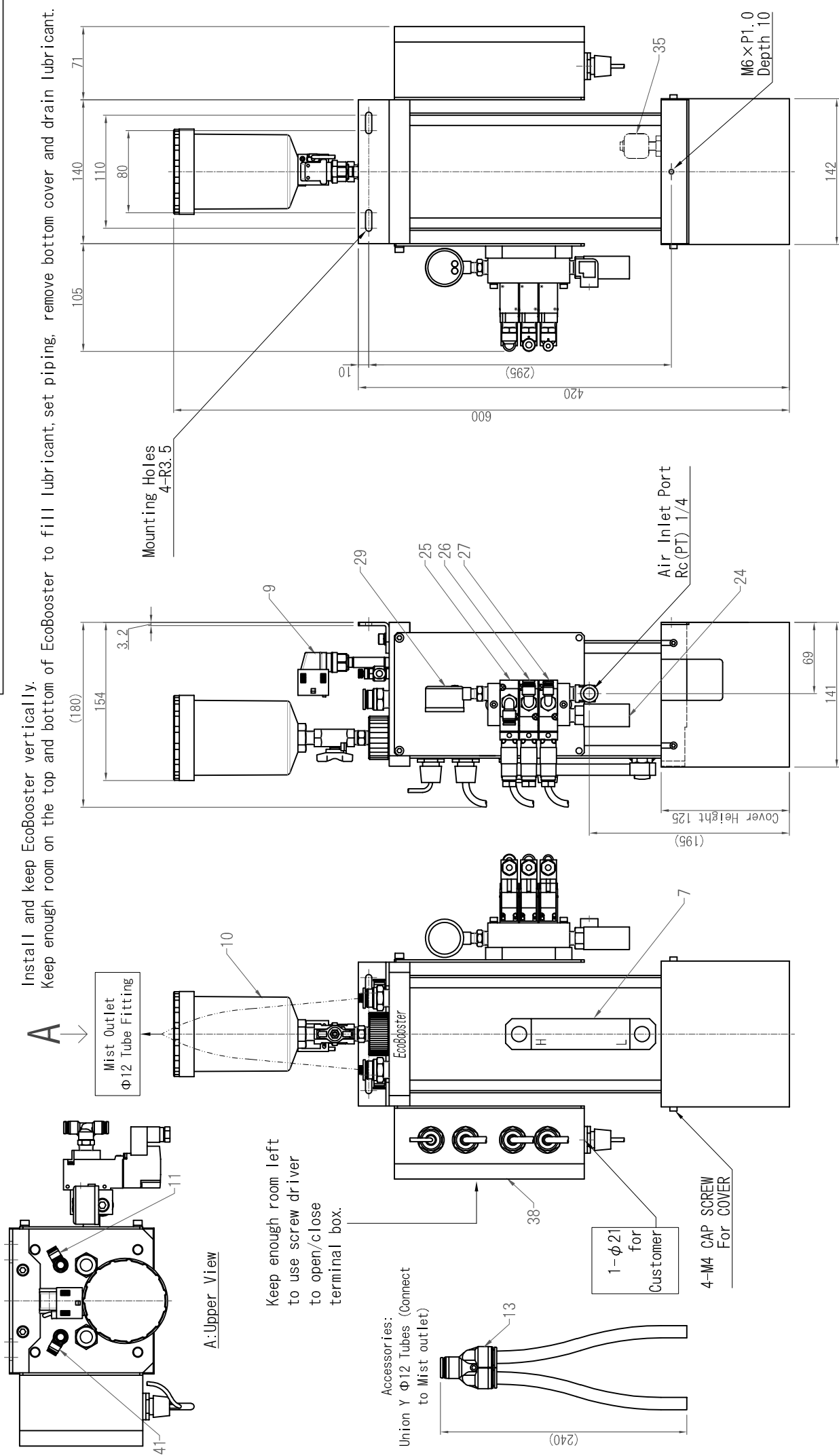
## WARRANTY

EcoBooster is backed with One-year Limited Warranty against defects in workmanship and/or materials. Warranty applies only when used under normal operating conditions. Warranty does not applied if a lubricant other than recommended oil is used.

## CONTACT

JAPAN	FUJI BC ENGINEERING CO., ltd. 3-1, Shioiricho, Mizuho-ku, Nagoya, 467-0851 JAPAN TEL: 81-52-819-5411 FAX: 81-52-819-5410 www.fuji-bc.com
USA	ITW PROBRANDS 805 E. Old 56 Hwy Olathe, Kansas 66061 4647 Hugh Howell Rd. Tucker, Georgia 30084 616 East Industrial St. DeWitt, Iowa 52742 TEL: 1-770-243-8800 FAX: 1-770-243-8899 www.itwprobrands.com
GERMANY	ACCU-LUBE MFG. GMBH Postfach 80 D-75433 Maulbronn, Germany TEL: 66-7043-5612 FAX: 66-7043-907098 www.accu-lube.com
CHINA	BLUEBE(SHANGHAI)ENVIRONMENTAL TECHNOLOGY CO., LTD. Room716-717, No.3, Lane no.58, East Xinjian Road, Minhang Shanghai, 201100, China TEL: 86-21-6427-3096 FAX: 86-21-6427-2373
TAIWAN	KANDO GROUP CORPORATION 7F, No.8 Lane 83, Sec. 1, Guang Fu Road, San Chung City, Taipei Hsien 242 Taiwan R.O.C. TEL: 886-2-2999-0393 FAX: 886-2-2999-0856
KOREA	HANSUNG GT CO., LTD. Gunpocheomdansaneop 1-ro 39, Gunpo-si, Gyeonggi-do, 15881 South Korea TEL: 82-31-428-8250 FAX: 82-31-455-0487
THAILAND	THAI WORTH CO., LTD. 2/9 Serithai Road, Kwaeng Kannayao, Khet Kannayao, Bangkok 10230 Thailand TEL: 66-2736-4560 FAX: 66-2736-4694
SINGAPORE	KEMET FAR EAST PTE.,LTD.
MALAYSIA	32, Ang Mo Kio Industrial Park 2, #02-12, Sing Industrial Complex,
INDONESIA	569510 Singapore
PHILIPPINES	TEL: 65-64820990 FAX: 65-64811363
VIETNAM	
INDIA	ITW INDIA PRIVATE LIMITED Plot No.34 to 37, Phase-2, IDA, APIIC, Pashamylaram, Medak Dist, 502307 India TEL: 91-8455-224700 FAX: 91-8455-224705

All rights reserved. Unauthorized reproducing or copying all or any part on the contents are strictly prohibited.

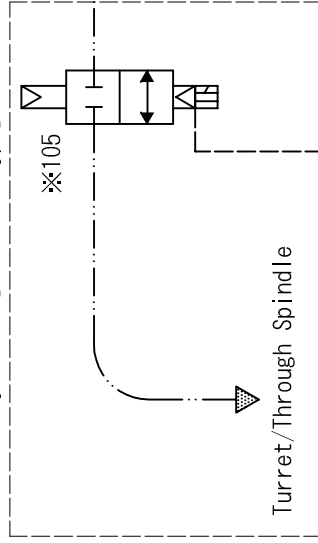


Install and keep EcoBooster vertically.  
Keep enough room on the top and bottom of EcoBooster to fill lubricant, set piping, remove bottom cover and drain lubricant.

PAPER SIZE : A 4

REVISONS		DATE	DESIGNED	DRAWN	CHECKED	APPROVED	TITLE
		' 20. 09. 10	INOUE	MAENO	M. ITO	INOUE	EcoBooster EB7EP Outline
						3RD ANGLE PROJECTION	SCALE
							DRAWING CODE
							EN-EB7EP-01-STD3. 10

※105 Rotary Valve [Full Boa Type] must be installed.



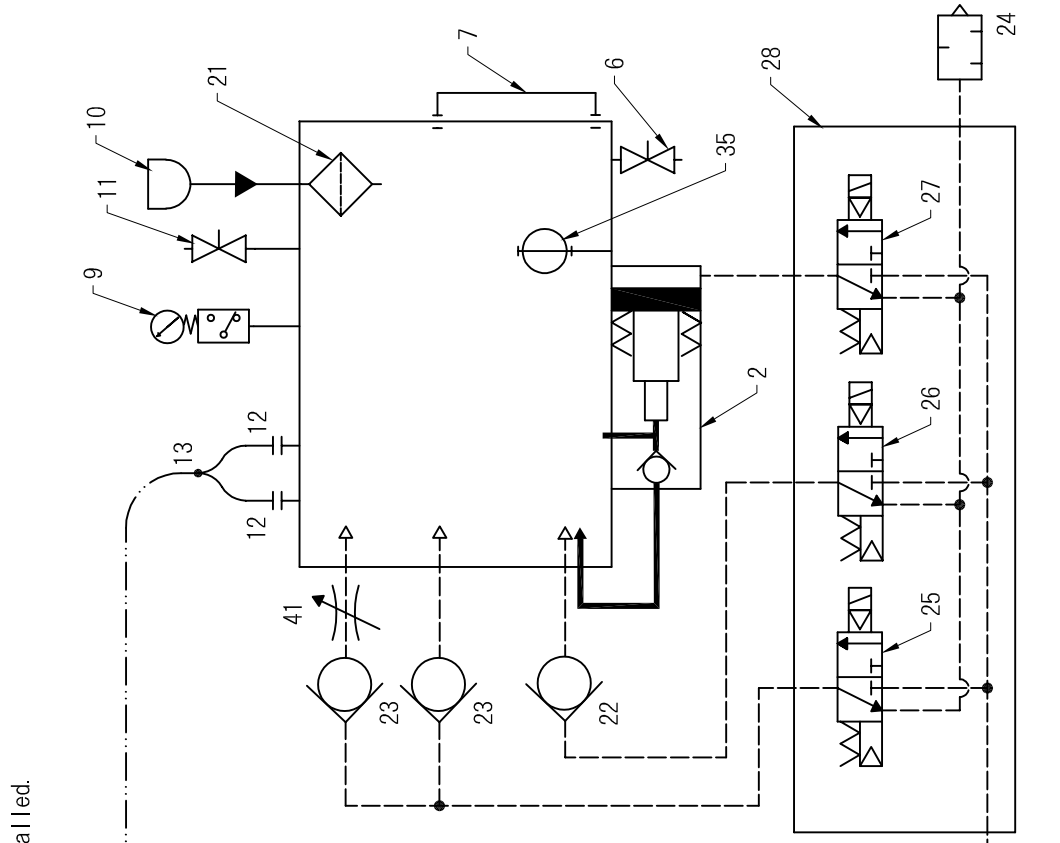
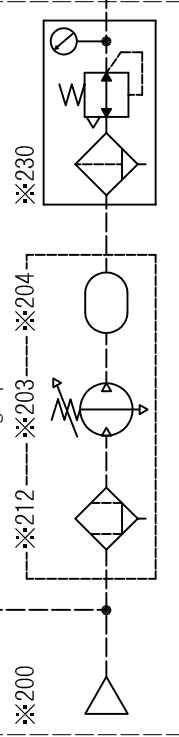
--- Air  
 --- Oil  
 - - - Mist

□ or ※ Prepare them by the customer.

Prepare them by the customer.

Air supply  
 Recommend Pressure 0.8MPa※※  
 Max. Pressure 0.8MPa※※※  
 Min. Pressure 0.4MPa  
 Max. Flow 350L/min[ANR]  
 Supply filtered clean air.

In case where high pressure is needed.



※ They are not included in EcoBOOSTER.

※※ AC type solenoid valves have a maximum working pressure of 0.7MPa.

PAPER SIZE : A 4

REVIEWS		DATE		DESIGNED		DRAWN		CHECKED		APPROVED		TITLE	
		18.06.05		INOUE		MAENO		SAKAI		FUTATSUGI		EcoBOOSTER EB7EP Flow Sheet	
										3RD ANGLE PROJECTION		DRAWING CODE	
												EN-EB7EP-02-STD3.01	

EcoBooster EB7EP Parts List

Drawing Code: EN-EB7EP-03-STD3.10

'20.09.10

No.	ITEM	Q'ty	MAKER	TYPE	REMARKS
2	BX PUMP	1	FUJI BC	7250	
6	DRAIN	1	KITZ	TKT1/8	
7	OIL LEVEL GAUGE	1	KYOWA	KHR-120A-M10	
9	INNER PRESS. CONTROL SW	1	SMC	ISE20C-Y-M-C01L-W ISE20C-X-M-C01L-W	2 PNP OUTPUT 2 NPN OUTPUT
10	OIL SUPPLY	1	FUJI BC	EB7CAP	OIL POT : 300mL
11	DEPRESSURE VALVE	1	PISCO	JNC6-01	
12	MIST OUTLET	2	PISCO	PC12-03	
13	UNION Y	1	PISCO	PY12	
21	OIL FILTER	1	FUJI BC	102TNK2103	
22	CHECK VALVE	1	PISCO	CVU6-6FN	MIST AIR LINE
23	CHECK VALVE	2	PISCO	CVU6-6FN	ACCELERATION AIR LINE
24	SILENSER	1	SMC	ANA1-02	
25	SOLENOID VALVE(AIR ACCELERATION)	1	SMC	VQZ312K-5YZB1-02	DC24V
26	SOLENOID VALVE(MIST AIR)	1		VQZ312-1YZB1-02	AC100V (0.7MPa)
27	SOLENOID VALVE(PUMP DRIVE)	1		VQZ312-2YZB1-02	AC200V (0.7MPa)
28	MANIFOLD	1	SMC	VV3QZ32-03C	3 stations
29	PRESSURE GAUGE	1	SMC	GA36-10-01	Air supply
35	FLOAT SWITCH(OIL DETECTOR)	1	NOHKEN	OLV-5	
38	TERMINAL BOX	1	TOYOGIKEN	BOXTM-2001	20 TERMINAL BLOCKS
41	ACCELERATION AIR BYPASS VALVE	1	PISCO	JNC6-01	
				Prepare it by the customer.	
105	Rotary valve (Air operated type 2 port valve)		CKD	CHB-V1-10-0L-□ (□ : Coil voltage)	(We recommend it.)
200	Air supply				
203	Booster regulator		SMC	VBA40A-04GN	"
204	Air tank		SMC	VBAT20A1-V	"
212	Mist separator		SMC	AFM30-03C-2-A	"
230	Filter regulator		SMC	AW30-03CG-2-B	"

## Wiring

Diagrams vary on the specification.  
Please refer to see electrical circuit of machinery maker or our operating instructions included with EcoBooster.  
For more information on diagrams contact your FUJI BC sales engineer.

## Terminal block layout

Diagrams vary on the specification.  
Please refer to see electrical circuit of machinery maker or our operating instructions included with EcoBooster.  
For more information on diagrams contact your FUJI BC sales engineer.



## Setting of EcoBooster INNER PRESSURE CONTROL SWITCH

Air Supply	Acceleration Air OUT1		Mist Air OUT2	
	n_1	H_1	n_2	H_2
0.4MPa	0.170	0.020	0.185	0.015
0.5MPa	0.220	0.020	0.235	0.015
0.6MPa	0.320	0.020	0.335	0.015
0.7MPa	0.420	0.020	0.435	0.015
※ 0.8MPa	0.520	0.020	0.535	0.015

Example for Supply Air Pressure of 0.4MPa

※ EB7EP AC Solenoid Type and EB3P, EB3EP Maximum Pressure : 0.7MPa

Adapted from SMC Co., Ltd. home page




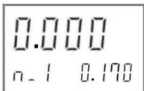



Model : ISE20C-X/Y-M-C01L-W

Display unit : MPa	OUT1 Output mode : Hysteresis	OUT2 Output mode : Hysteresis
Display color : Normally red	Normal/Reversed Output : Reversed	Normal/Reversed Output : Reversed
	Response time : 1.5ms	Response time : 1.5ms

OUT1 Set value n\_1 : 0.170 MPa  
Hysteresis H\_1 : 0.020 MPa

OUT2 Set value n\_2 : 0.185 MPa  
Hysteresis H\_2 : 0.015 MPa

Setting Procedure 1 (3-step setting) The usual procedure. Other settings are set at the shipping time from FUJI BC ENGINEERING.

Mode	Display	Operation procedure
Preparation, measurement mode		Connect 12 to 24 VDC power supply. Go to measurement mode.
Entering the set value [n_1] for OUT1		Enter OUT1 set value [n_1] on the sub display with ▲ or ▼ buttons.
		Press the Ⓢ button once. Go to the setting of set value [n_1] for OUT1. Press the ▲ or ▼ button to change the set value on the right side of the sub display (see left).
		Press the Ⓢ button once. Return to measurement mode.
Entering the set value [n_2] for OUT2		Enter OUT2 set value [n_2] on the sub display with ▲ or ▼ buttons.
		Press the Ⓢ button once. Go to the setting of set value [n_2] for OUT2. Press the ▲ or ▼ button to change the set value on the right side of the sub display (see left).
		Press the Ⓢ button once. Return to measurement mode.
	Settings complete.	

**Setting Procedure 2 (Simple setting)** Perform this procedure if you have changed the Hysteresis or Response time by mistake.

Setting items : OUT1, OUT2 Set value [n\_1, n\_2], Hysteresis [H\_1, H\_2], Response time

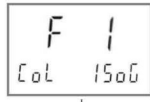
Mode	Display	Operation procedure
Preparation, measurement mode		Connect 12 to 24 VDC power supply. Go to measurement mode.
Entering the set value [n_1] for OUT1		Hold down the [SET] button for at least 1 seconds, but no more than 3 seconds [SET] will be shown on the main display.
		Release the button while [SET] is showing on the display. The main display will show the current pressure value and the left sub display will show the set value [n_1]. The set value will be blinking on the right sub display. Go to the setting of set value [n_1] for OUT1.
		Press the ▲ or ▼ button to change the set value on the right side of the sub display (see left).
Setting of hysteresis [H_1] for OUT1		Press the [SET] button once. Go to hysteresis [H_1] settings for OUT1.
		Press the ▲ or ▼ button to change the set value on the right side of the sub display (see left).
Setting response time for OUT1		Press the [SET] button once. Go to response time settings for OUT1.
		Press the ▲ or ▼ button to change the value on the right side of the sub screen (see left).
Entering the set value [n_2] for OUT2		Hold down the [SET] button for at least 1 seconds, but no more than 3 seconds [SET] will be shown on the main display.
		Press the [SET] button once. Go to the setting of set value [n_2] for OUT2.
		Press the ▲ or ▼ button to change the set value on the right side of the sub display (see left).
Setting of hysteresis [H_2] for OUT2		Press the [SET] button once. Go to hysteresis [H_2] settings for OUT2.
		Press the ▲ or ▼ button to change the set value on the right side of the sub display (see left).
Setting response time for OUT2		Press the [SET] button once. Go to response time settings for OUT2.
		Press the ▲ or ▼ button to change the value on the right side of the sub screen (see left).
Measurement mode		Hold the [SET] button for 2 second or longer. Return to measurement mode.
	Settings complete.	

**Setting Procedure 3 (Function Settings)** Perform this procedure if you have restored SMC default settings.

Setting items : OUT1, OUT2 Output mode, Normal/Reversed output, Set value [n\_1, n\_2], Hysteresis [H\_1, H\_2], Response time, Display color

Mode	Display	Operation procedure
Preparation, measurement mode		Connect 12 to 24 VDC power supply. Go to measurement mode.
Function selection mode		Hold down the $\text{S}$ button for at least 3 seconds, but no more than 5 seconds [F 0] will be shown on the main display. Release the button when [F 0] is displayed to return to function selection mode.
Display unit settings		Display [F 0] by pressing the $\blacktriangle$ or $\blacktriangledown$ button in function selection mode. Press the $\text{S}$ button once. Go to display unit settings.
		Press the $\blacktriangle$ or $\blacktriangledown$ button to change the value on the right side of the sub screen (see left).
		Press the $\text{S}$ button once. Return to function selection mode.
Setting output mode for OUT1		Display [F 1] by pressing the $\blacktriangle$ or $\blacktriangledown$ button in function selection mode. Press the $\text{S}$ button once. Go to output mode settings for OUT1.
		Press the $\blacktriangle$ or $\blacktriangledown$ button to change the value on the right side of the sub screen (see left).
Setting of normal/reversed output for OUT1		Press the $\text{S}$ button once. Go to normal/reversed output settings for OUT1.
		Press the $\blacktriangle$ or $\blacktriangledown$ button to change the value on the right side of the sub screen (see left).
Entering the set value [n_1] for OUT1		Press the $\text{S}$ button once. Go to the setting of set value [n_1] for OUT1.
		Press the $\blacktriangle$ or $\blacktriangledown$ button to change the set value on the right side of the sub display (see left).
Setting of hysteresis [H_1] for OUT1		Press the $\text{S}$ button once. Go to hysteresis [H_1] settings for OUT1.
		Press the $\blacktriangle$ or $\blacktriangledown$ button to change the set value on the right side of the sub display (see left).
Setting response time for OUT1		Press the $\text{S}$ button once. Go to response time settings for OUT1.
		Press the $\blacktriangle$ or $\blacktriangledown$ button to change the value on the right side of the sub screen (see left).

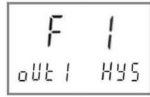
Display color settings



Press the **Ⓢ** button once.  
Go to display color settings.

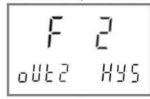


Press the **▲** or **▼** button to change the value on the right side of the sub screen (see left).

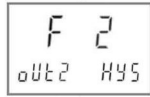


Press the **Ⓢ** button once.  
Return to function selection mode.

Setting output mode for OUT2

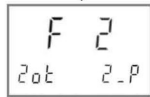


Display [F 2] by pressing the **▲** or **▼** button in function selection mode.  
Press the **Ⓢ** button once.  
Go to output mode settings for OUT2.

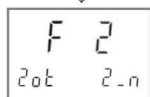


Press the **▲** or **▼** button to change the value on the right side of the sub screen (see left).

Setting of normal/reversed output for OUT2

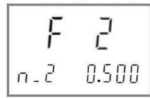


Press the **Ⓢ** button once.  
Go to normal/reversed output settings for OUT2.

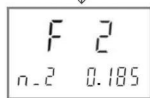


Press the **▲** or **▼** button to change the value on the right side of the sub screen (see left).

Entering the set value [n\_2] for OUT2

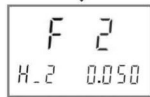


Press the **Ⓢ** button once.  
Go to the setting of set value [n\_2] for OUT2.

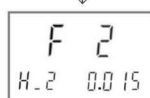


Press the **▲** or **▼** button to change the set value on the right side of the sub display (see left).

Setting of hysteresis [H\_2] for OUT2

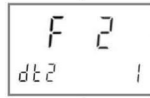


Press the **Ⓢ** button once.  
Go to hysteresis [H\_2] settings for OUT2.

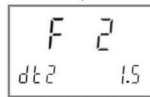


Press the **▲** or **▼** button to change the set value on the right side of the sub display (see left).

Setting response time for OUT2

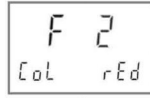


Press the **Ⓢ** button once.  
Go to response time settings for OUT2.

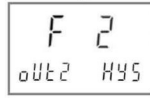


Press the **▲** or **▼** button to change the value on the right side of the sub screen (see left).

Display color settings



Press the **Ⓢ** button once.  
Move to display colour settings; this is the same as that of OUT1, which has already been set.



Press the **Ⓢ** button once.  
Return to function selection mode.

Measurement mode



Hold the **Ⓢ** button for 2 second or longer.  
Return to measurement mode.

Settings complete.

Zero-clear



Press the **▲** and **▼** buttons simultaneously for around 1 second under atmospheric pressure.  
This will reset the displayed value to zero.

## ■[F99] Reset to default settings



If the product settings are uncertain, the SMC default values can be restored.

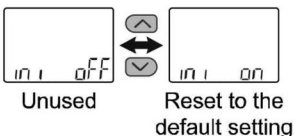

### <Operation>

Press the  or  button in function selection mode to display [F99].


Press the  button.  Move on to reset to default settings.

**Reset to default settings**

Press the  or  button to select reset to default settings.





Unused      Reset to the default setting

[oFF] (not use) is selected  
Press the  button to set.

Return to function selection mode.

[on] (reset to default settings) is selected

Press the  and  buttons simultaneously for 5 second or longer.

All settings are returned to the default values. Return to function selection mode.

[F99] Reset to default settings completed

Return to **【Digital Pressure Switch Operation Manual】**、  
Perform Setting Procedure 3 (Function Settings).